

Our Philosophy

God creates us all special and unique. We at Eastridge Childcare and Learning Center believe that we were created to grow and develop the skills and abilities God gives each one of us. Our programs and activities are based on Godly principles and sound, proven curriculum.

We also believe that Eastridge Childcare and Learning Center is an extension of the home. Part of our instruction includes techniques of role-modeling and hands-on skills that can be reinforced in parenting.

Each child is treated equally regardless of race, family background, or religion. We believe that our employees are a big part of motivating children to learn and grow. This takes an employee that enjoys working past the level of basic care, demonstrating a love and concern for each child.



eastridge⁺ childcare and learning center

5025 Issaquah Pine Lake Rd SE
Issaquah, WA 98029

Phone: 425.270.6328

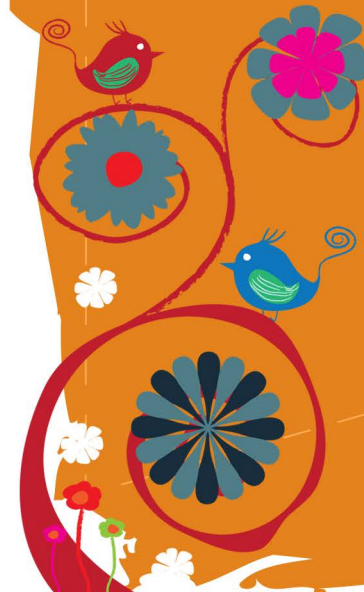
Email the Director, Jessi Harris
jessi.harris@eastridgetoday.com

EastridgeChildcare.com

eastridge⁺ childcare and learning center



a Christian-based program
committed to building our future
serving 6 weeks - 5 years old



2020

Eastridge Childcare and Learning Center Tuition Prices

Class	2 days	3 days	4 days	5 days
Moonbeams (Infant) 6 weeks-12 months	*****	*****	*****	\$1,975
Rainbows (Young Toddler) 12-18 months (up to 10 hrs)	*****	\$1,377	\$1,547	\$1,700
Part time (up to 6 hours)	*****	\$1,102	\$1,238	\$1,360
Shooting Stars, Snowflakes (Toddlers) 18-30 months (up to 10 hrs)	*****	\$1,316	\$1,479	\$1,625
Part time (up to 6 hours)	*****	\$1,053	\$1,183	\$1,300
Preschool & Fully Potty Trained Full Day 30mo-5 years	\$855	\$1,154	\$1,297	\$1,425
Part time (up to 6 hrs)	\$684	\$923	\$1,037	\$1,140

Tuition rates for January 2020-December 2020

Please note: Full time is up to 10 hours per day; part-time is up to 6 hours per day and picked up no later than 2:30pm. Tuition changes from Toddler to Preschool when your child is 2-1/2 and fully potty trained.

Extended day charges are for part-time students and anyone exceeding 10 hours per day for full-time care.

New Student Deposit: 1 child \$250, 2 children \$300

One Child: Registration is \$100 and the remaining \$150 goes toward first month's tuition.

Two Children: Registration is \$150 and the remaining \$150 goes toward first month's tuition.

*This Deposit is non-refundable and non-transferable

Annual Materials Fee: One Child: \$75 Two Children: \$125

Discount: The second child discount is only for full-time students. The first child is charged the full rate and the second child receives a 10% discount. The discount is calculated on the lesser of the two tuitions.

Part-Time Policy: Part-time days may not be traded for other times or days. An extended day charge will be added if you exceed 6 hours or 2:30pm. Extra times and days may be purchased at the daily rate, subject to space availability.

NO CREDIT FOR SICKNESS OR VACATION.

Hours of Operation

6:30 am - 6:00 pm

Monday - Friday

Serving Ages

6 weeks - 5 years old

Amenities Includes

- Our Center is secure with key pad entry
- Snacks & lunch
- Early childhood curriculum
- Outdoor & Indoor play areas
- Early Achievers Level 3 Program

